

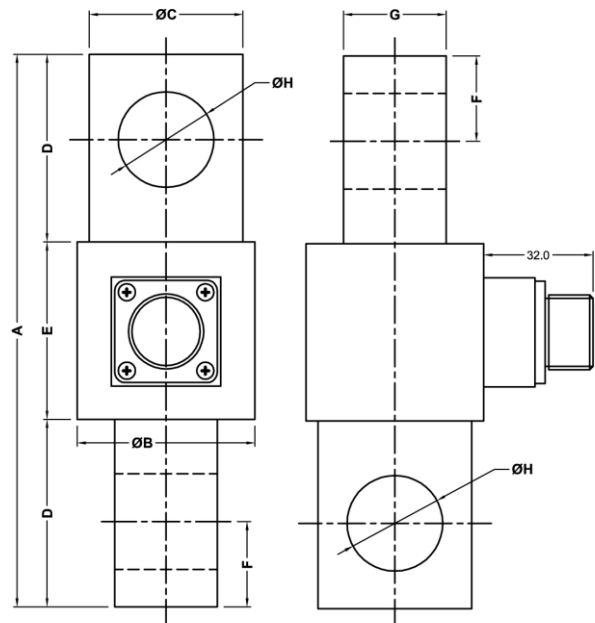
### FEATURES :

- \* *Simple & Quick 2 Buttons*
- \* *Small Size*
- \* *Easy to Use*
- \* *Display Illumination*
- \* *Hand Held*
- \* *Low Battery Indication*
- \* *Auto Power Off*
- \* *With Carrying Case*



### SPECIFICATIONS :

Rated Capacity	2, 3, 5, 10, 15, 20 Tonne
Display	4 ½ Digits 20 mm LCD
Accuracy	± 0.10 % FSO
Resolution	1 Kg or 10 Kgs
Power Supply	3.6 V Battery / 9V Adapter
Operation Time	> 2 Hrs. Continuous
Circuitry	Microprocessor Based
Operating Temp.	0 - 50° C
Enclosure	ABS Plastic



### DIMENSIONS :

CAPACITY	A	ØB	ØC	D	E	F	G	ØH
2, 3, 5 Tonne	162.0	Ø52.0	Ø45.0	55.0	52.0	25.0	30.0	Ø28.0
10 Tonne	210.0	Ø65.0	Ø55.0	75.0	60.0	35.0	40.0	Ø38.0
15, 20 Tonne	280.0	Ø87.0	Ø75.0	105.0	70.0	50.0	50.0	Ø52.0