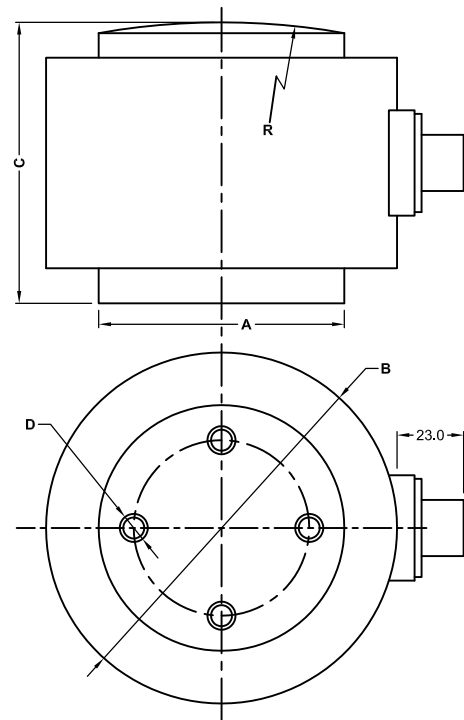


FEATURES :

- * High Performance
- * Rugged Body
- * Good Repeatability
- * Easy to Install
- * Temperature Compensated
- * Good Reliability
- * Wide Range

LCC**SPECIFICATIONS :**

Rated Capacity	:	40, 50, 60, 100, 150, 200 Tonne.
Excitation Voltage	:	10 - 12 V DC.
Nominal Output	:	1 mV/V \pm 0.25 %.
Non Linearity	:	\pm 0.50% FSO.
Hysteresis	:	\pm 0.50% FSO.
Non-Repeatability	:	\pm 0.10% FSO.
Creep (30 minutes)	:	\pm 0.05% FSO.
Zero Balance	:	\pm 2.0% FSO.
Bridge Resistance (40-60 T)	:	350 \pm 10 Ohms.
Bridge Resistance (100-200 T)	:	700 \pm 20 Ohms.
Insulation Resistance	:	1000 M Ohms.
Temp. Comp. Range	:	0°C to 60°C.
Temp. Effect on Output	:	0.01% FSO/°C.
Temp. Effect on Zero	:	0.01% FSO/°C.
Safe Overload	:	150% FSO.
Ultimate Overload	:	200% FSO.

DIMENSIONS :

CAPACITY	A	B	C	D	R
40 - 60 Ton	Ø75.0	Ø110	89	M10x15 Deepx3 Nos. @ 55 PCD	200
100-200 Ton	Ø101.6	Ø150	89	M12x20 Deepx4 Nos. @ 80 PCD	200