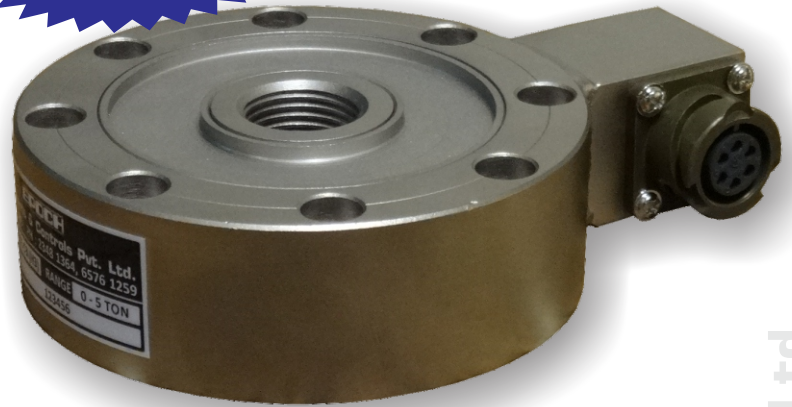


LSE-H3**FEATURES :**

- * *Good Linearity*
- * *Good Repeatability*
- * *Easy to Install*
- * *Temperature Compensated*
- * *Good Reliability*
- * *Wide Range*

**SPECIFICATIONS :**

Rated Capacity	: 1, 2, 3, 5, 7.5 Tonne.
Excitation Voltage	: 2.5 - 12 V DC.
Nominal Output	: 2 mV/V \pm 0.25 %.
Non Linearity	: \pm 0.05% FSO.
Hysteresis	: \pm 0.05% FSO.
Non-Repeatability	: \pm 0.05% FSO..
Creep (30 minutes)	: \pm 0.05% FSO.
Zero Balance	: \pm 2.0% FSO.
Input Resistance	: 700 \pm 10 Ohms.
Output Resistance	: 700 \pm 5 Ohms.
Insulation Resistance	: 1000 M Ohms.
Temp. Comp. Range	: 0°C to 50°C.
Temp. Effect on Output	: 0.005% FSO/°C.
Temp. Effect on Zero	: 0.005% FSO/°C.
Safe Overload	: 150% FSO.
Ultimate Overload	: 200% FSO.

DIMENSIONS :