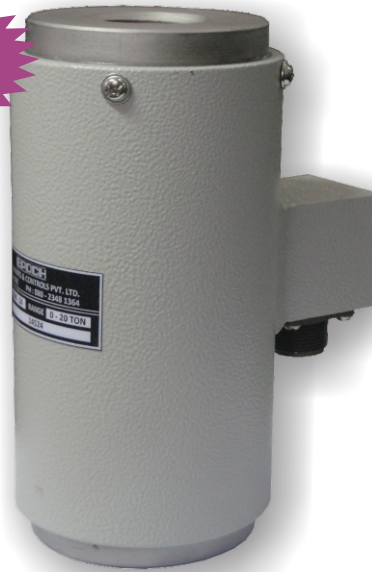
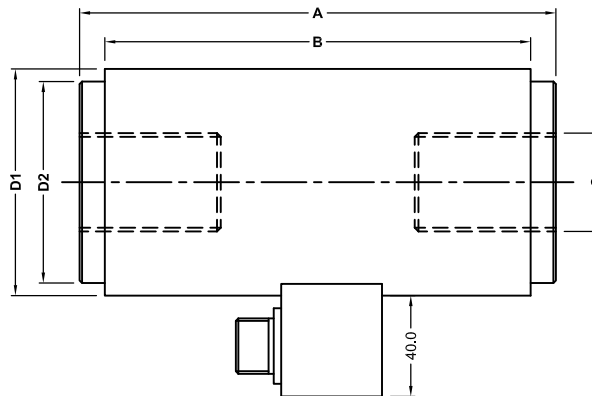


**FEATURES :**

- \* High Accuracy
- \* Good Repeatability
- \* Easy to Install
- \* Robust Body
- \* Good Reliability
- \* Wide Range

**LOW****SPECIFICATIONS :**

Rated Capacity	2, 3, 5, 10, 15, 20, 25, 30, 40, 50 Tonne		
Excitation Voltage	10 - 12 VDC	Insulation Resistance (50 V DC)	1000 M Ohms
Nominal Output	1.0 mV/V $\pm$ 0.25 %	Zero Balance	$\pm$ 2.0 % FSO
Non - Linearity	$\pm$ 0.10 % FSO	Safe Overload	150 %
Hysteresis	$\pm$ 0.10 % FSO	Ultimate Overload	200 %
Non-Repeatability	$\pm$ 0.05 % FSO	Temp. Compensated Range	0 - 60 °C
Creep (30 minutes)	$\pm$ 0.05 % FSO	Temperature Effect on Output	0.0015% FSO/°C
Input Resistance	350 $\pm$ 10 Ohms	Temperature Effect on Zero	0.0020% FSO/°C
Output Resistance	350 $\pm$ 5 Ohms	Protection Class	IP-66

**DIMENSIONS :**

CAP	2 - 5 T	10 T	15 & 20 T	25 & 30 T	40 T	50 T
A	140.0	160.0	170.0	210.0	245.0	280.0
B	120.0	140.0	150.0	190.0	220.0	255.0
C	M24 x 2P	M30 x 2P	M36 x 3P	M45 x 3P	M52 x 3P	M60 x 4P
D1	Ø 60.0	Ø 73.0	Ø 86.0	Ø 105.0	Ø 115.0	Ø 138.0
D2	Ø 52.0	Ø 65.0	Ø 76.0	Ø 95.0	Ø 105.0	Ø 125.0

**Office** : F # 1, Paradise Apartments, No. 11, 1<sup>st</sup> Floor, 5<sup>th</sup> Cross, Prashanthnagar, Bangalore - 560 079.  
Ph : 080 - 2348 1364, 6576 1259. Fax : 080 - 2328 3728. E-mail : sales@epochloadcell.com.

**Factory** : No. 16, Bhadrappa Estate, 54, Magadi Main Road, Kamakshipalya, Bangalore - 560 079.  
Ph : 080 - 2328 7998. E-mail : epochinstruments@yahoo.com, Web : www.epochloadcell.com.